

Dear KYMCO **UXV 450i** Users:

Thank you for purchasing this KYMCO **UXV 450i** and welcome to the family of KYMCO **UXV 450i** riders. To enjoy safety and more pleasant riding, become thoroughly familiar with this owner manual before you ride the **UXV 450i**.

Your safety depends not only on your own alertness and familiarity with the **UXV 450i** but also the UXV mechanical condition.

A pre-ride inspection before every outing and regular maintenance are essential. The quality of each KYMCO **UXV 450i** is guaranteed.

Note: The information and specifications stated in this manual are for reference only and subject to change without notice.

Table of Contents

- Warnings -----(1- 4)
- Introduction to the UXV 450i ----- (5 - 16)
- Features and Controls ----- (17- 43)
- How to Operate -----(44- 51)
- Emission Control System -----(52 – 53)
- Maintenance and Lubrication -----(54 – 69)
- Specifications -----(70 – 74)
- Maintenance Schedule -----(75 – 76)
- Index
- Maintenance Records

WARNINGS

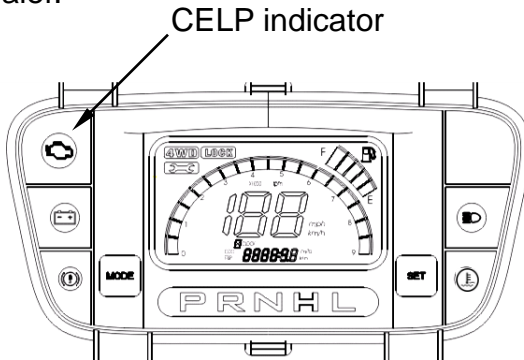
Battery & EFI Damage Alert

WARNING

To avoid damage from the vehicle's electronic fuel injection system, do not remove or install a battery wire when the ignition switch is at the "ON" position.

CELP indicator :

When the CELP is lighted, it may indicate that a fault has been detected in the vehicle's EFI or electrical system and requires immediate inspection by a KYMCO dealer.



Dangerous Alert

CAUTION:

◆POTENTIAL HAZARD

Operating your UTV in areas with tall or loose vegetation.

◆WHAT CAN HAPPEN

Combustible materials such as tall grass or reeds exposed to the exhaust system's hot components could result in a fire.

◆HOW TO AVOID THIS HAZARD

Clear away plant debris or other materials away from the exhaust system. Use care as the exhaust system can get very hot.

WARNINGS

This vehicle can be dangerous to operate.

An impact or rollover can occur quickly even during routine maneuvers such as turning and driving on hills or over obstacles, if you fail to take proper precautions.

For your safety, understand and follow all the warnings contained in this Owner's Manual and labels on this vehicle.

Keep this Owner's Manual with this vehicle at all times.

Failure to follow the warnings contained in this manual can result in serious injury or death.

Particularly important information is distinguished in this manual by the following notations:



WARNING

Indicates a strong possibility that serious injury or death may result if instructions are not followed.



CAUTION

Indicates a possibility that equipment or property damage could result if instructions are not followed.



Note:

Gives helpful information

WARNINGS

This vehicle is not a toy and can be dangerous to operate.

- Always drive slowly and be extra careful when operating on unfamiliar terrain. Always be aware of various terrain conditions when operating this vehicle.
- Never operate on extreme rough, slippery, or loose terrain.
- Always follow proper procedures for turning as represented in this manual. Begin turning at slow speeds before attempting to turn at faster speeds. Do not turn at high speeds.
- Never operate on hills too steep for your abilities or across the side of a hill. Practice on smaller hills before attempting larger hills.
- Always use proper procedures if you stall or roll backward when climbing a hill. To avoid stalling, maintain a steady speed when climbing a hill. In case of you stall or begin to roll downward, follow the procedure for braking described in this manual.
- Operation of this vehicle is restricted to people 16 years of age and older. No person under the age of 6 may ride as a passenger on this vehicle.

WARNINGS

Safety First!

- **Always** read the owner's manual carefully and follow the operating procedures described. Pay special attention to the warnings contained in the manual and on all labels posted on the vehicle.
- **Never** operate this vehicle with the canopy (roll cage) frame removed.
- **Always** wear the seat belt, helmet and eye protection when driving.
- **Never** operate this vehicle on a public roads. Be cautious when operating on non-public dirt or gravel roads, due to oncoming traffic.
- **Always** avoid paved surfaces. This vehicle isn't designed to be used on paved surfaces and may seriously affect handling and control.
- **Always** follow this age prescription:
Operation of this vehicle is restricted to people 16 years of age and older.
No person under the age of 6 may ride as a passenger on this vehicle.
- **Always** keep combustible materials away the exhaust system. Exposure to the hot components could result in a fire.

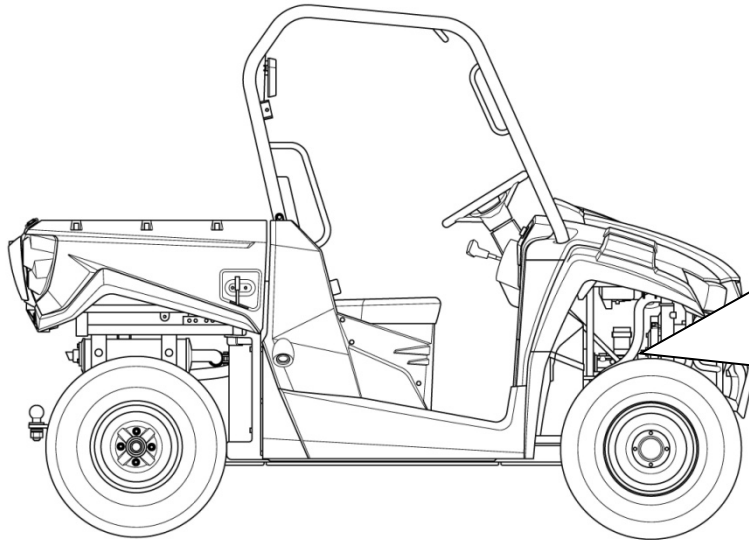
Introduction.

Serial Number Locations

This vehicle has 2 serial numbers: The frame number and Engine serial number.

The frame number is located on the frame near right front wheel place.

Frame Number

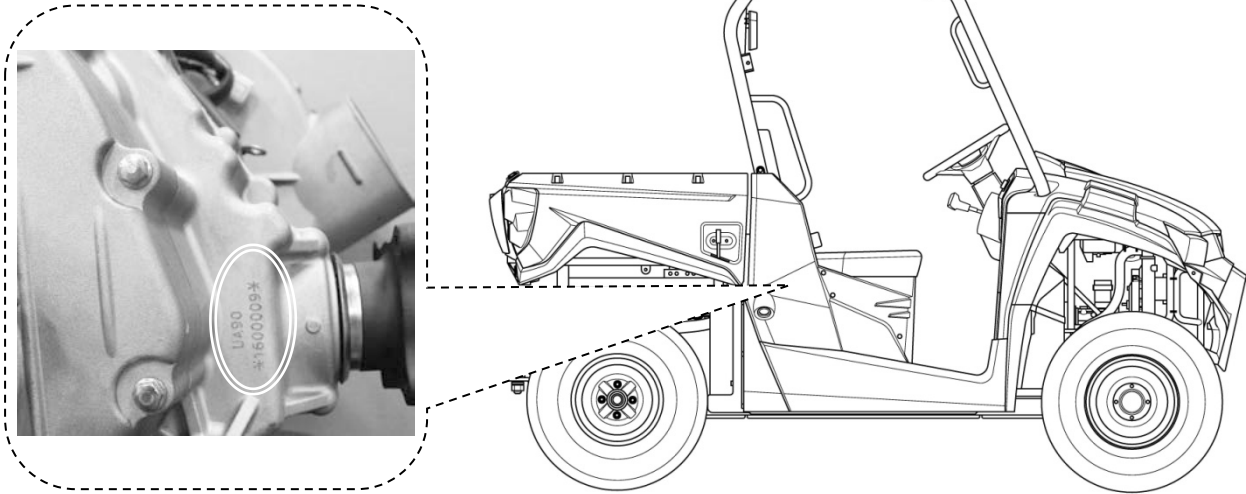


Introduction.

Serial Number Locations

The engine serial number is located on the left side of the engine crankcase.

Engine Serial Number



Introduction.

Ignition Switch Key, Glove Compartment Key.

Two keys come with this vehicle. Keep the spare in the safe place. The keys operate the ignition switch, glove compartment. Record the number located on the key incase you lose both keys.

KEY NUMBER: _____



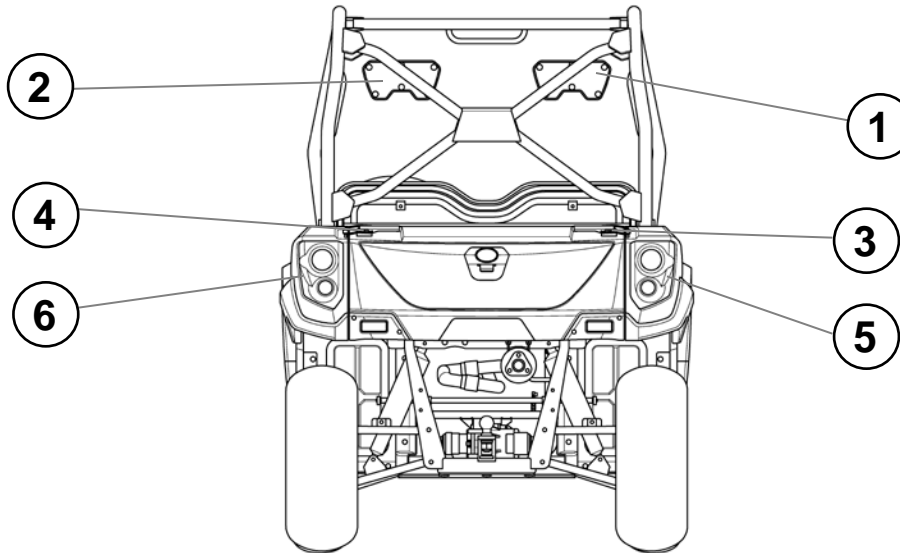
1. Ignition Switch



2. Glove Compartment

Introduction.

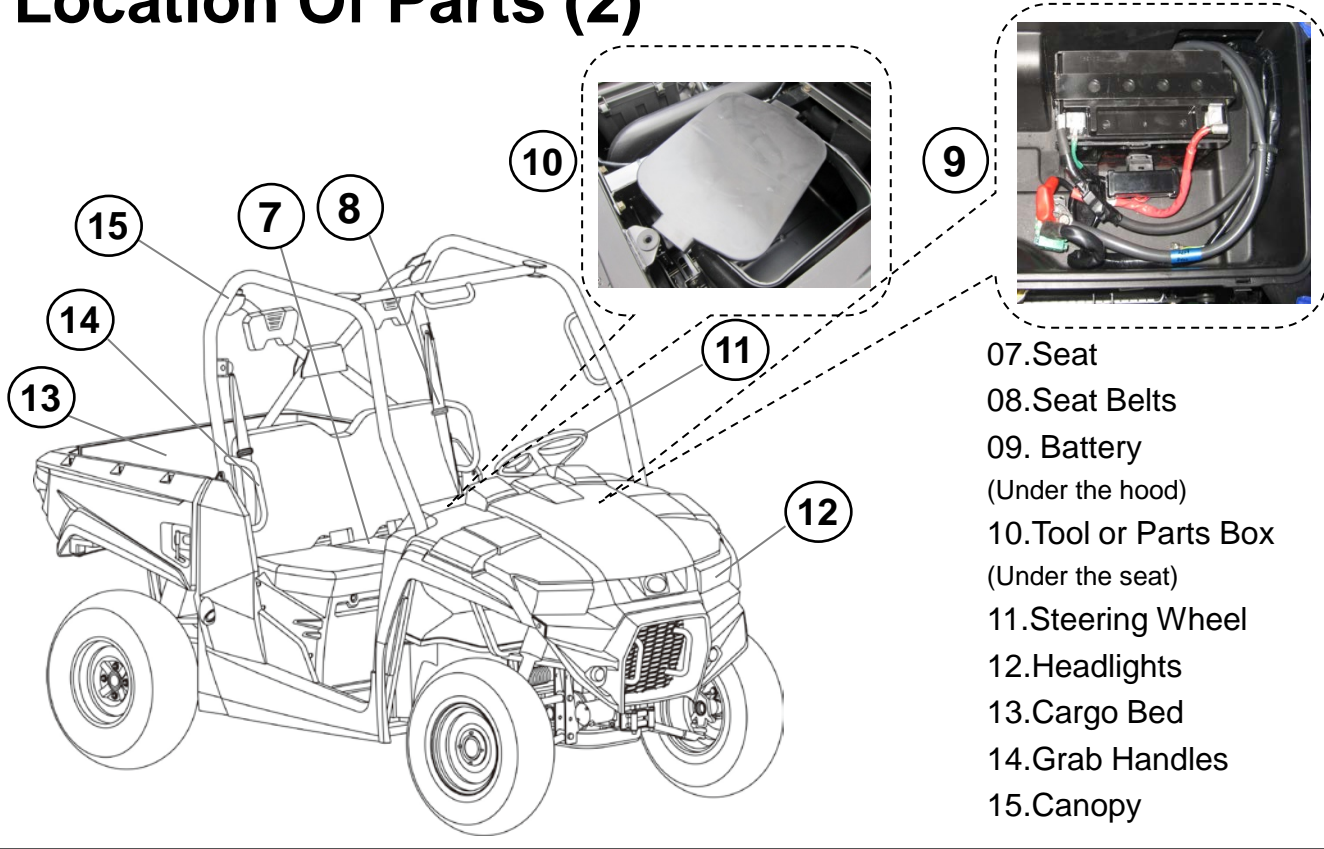
Location Of Parts (1)



- 1.Right Head Cushion 2.Left Head Cushion 3.Right Latch Handle
4.Left Latch Handle 5.Right Tail /Brake Light 6.Left Tail / Brake / Back
up Light

Introduction.

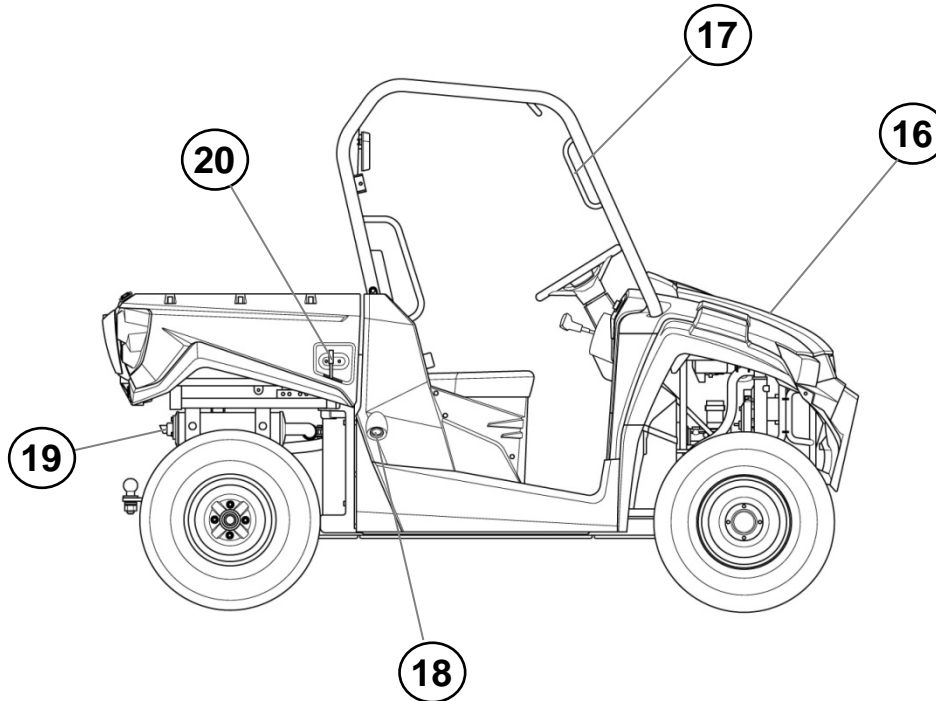
Location Of Parts (2)



- 07. Seat
- 08. Seat Belts
- 09. Battery
(Under the hood)
- 10. Tool or Parts Box
(Under the seat)
- 11. Steering Wheel
- 12. Headlights
- 13. Cargo Bed
- 14. Grab Handles
- 15. Canopy

Introduction.

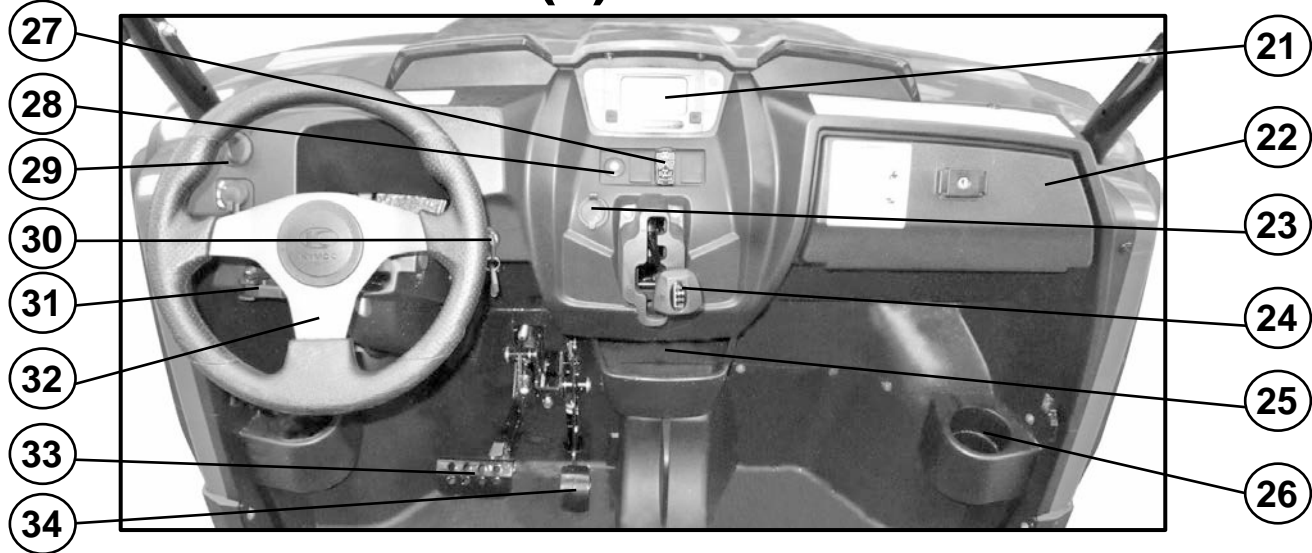
Location Of Parts (3)



- 16.Hood
- 17.Grab Handles
- 18.Fuel Tank Cap
- 19.Muffler&
Spark Arrester
- 20.Cargo Bed Lever

Introduction.

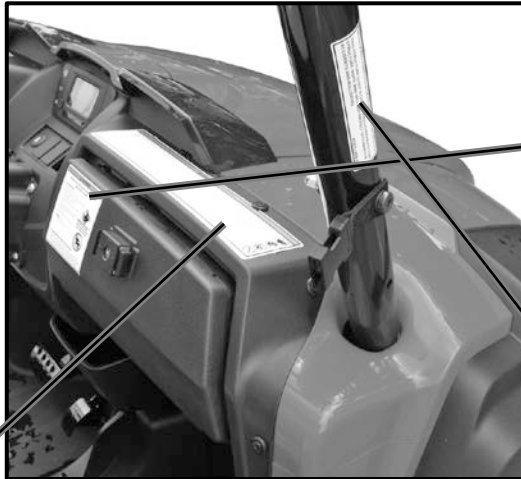
Location Of Parts(4)



- 21.** Speedometer **22.** Glove Compartment **23.** Auxiliary Outlet
24. Gear Shifter **25.** Center Glove Compartment **26.** Side Compartment
27. Rear differential lock switch (Turf model) **28.** Seat belt lamp **29.** Light Switch
30. Ignition Switch **31.** Parking Brake Lever **32.** Steering Wheel
33. Brake Pedal **34.** Throttle Pedal

Introduction.

Warning Labels Location



1

⚠ WARNING

Improper Use of Off-Highway Vehicles Can Cause Severe Injury or Death

Drive Responsibly
Avoid loss of control and rollovers:

- Avoid abrupt maneuvers, sideways sliding, skidding, or fishtailing, and never do donuts.
- Slow down before entering a turn.
- Avoid hard acceleration when turning, even from a stop.
- Plan for hills, rough terrain, ruts, and other changes in traction and terrain. Avoid pond surfaces.
- Avoid side hilling (riding across slopes).

NEVER operate on hills greater than 15°

Rollovers have caused severe injuries and death, even on flat, open areas.




Be Sure Riders Pay Attention and Plan Ahead
If you think or feel the vehicle may tip or roll, reduce your risk of injury:

- Keep a firm grip on the steering wheel or handholds and brace yourself.
- Do not put any part of your body outside of the vehicle for any reason.

87516-AL-E8-E00

3

⚠ WARNING

VEHICLE ROLLOVER COULD CAUSE SEVERE INJURY OR DEATH.

THIS STRUCTURE IS NOT A CERTIFIED ROLLOVER PROTECTIVE STRUCTURE (ROPS) AND WILL NOT PROTECT OCCUPANTS IN ACCIDENTS AND ROLLOVERS.

87321-LEE8-E00

2

⚠ WARNING

IMPROPER TIRE PRESSURE OR OVER-LOADING CAN CAUSE LOSS OF CONTROL AND RESULT IN SEVERE INJURY OR DEATH.

ALWAYS

- WEAR A SEAT BELT WHEN RIDING IN THIS VEHICLE.
- KEEP YOUR HANDS AND FEET INSIDE THE VEHICLE AND WATCH FOR BRANCHES, BRUSH, OR OTHER HAZARDS THAT COULD ENTER THE VEHICLE.
- ROLLOVER COULD CAUSE SEVERE INJURY OR DEATH.
- THE ROLL BAR AND SEATBELT CANNOT PROTECT OCCUPANTS IN ALL ACCIDENTS, INCLUDING ROLLOVER.
- DRIVE STRAIGHT UP AND DOWN INCLINES - DRIVING ACROSS THE SIDE OF AN INCLINE INCREASES THE RISK OF OVERTURNS.

LOCATE AND READ OPERATOR'S MANUAL.
FOLLOW ALL INSTRUCTIONS AND WARNINGS.

NEVER

- EXCEED THE VEHICLE LOAD CAPACITY OF 910 KG (2006 LBS). INCLUDES WEIGHT OF OPERATOR, PASSENGER, CARGO, ACCESSORIES, AND TRAILER TONGUE. MAXIMUM LOAD IN CARGO BED: 200KG(441 LBS).
- WHEN LOADED-BACK DOWN A SLOPE AND APPLY BRAKES OR ACCELERATE UPHILL.
- LOADING/TRAILER TOWING CARGO OR TRAILER CAN AFFECT STABILITY AND HANDLING. WHEN LOADED WITH CARGO OR TOWING A TRAILER
 - REDUCE SPEED
 - ALLOW MORE ROOMS TO STOP
 - AVOID HILLS AND ROUGH TERRAIN
 - OPERATE IN LOW RANGE GEARS ONLY

NEVER use on public highways where a collision with cars or trucks can occur.

ALWAYS use an approved helmet and protective gear

NEVER use with drugs or alcohol

Operators must be 16 years or older, have a valid drivers licence and minors must be supervised by an adult.






87515-AL-E8-E00

Introduction.

Warning Labels Location

4



5



6



Introduction.


Warning Labels Location

7

⚠ WARNING

SEVERE INJURY OR DEATH CAN RESULT IF YOU IGNORE FOLLOWING:

- MAXIMUM LOAD IN CARGO BED: 200 KG (441 LBS).
- BE SURE CARGO IS SECURED, A LOOSE LOAD COULD SHIFT AND CHANGE HANDLING UNEXPECTEDLY.
- KEEP WEIGHT IN THE CARGO BED CENTERED, LOW AND FORWARD, TOP-HEAVY LOAD INCREASES THE RISK OF OVERTURNS.
- NEVER CARRY PASSENGERS IN CARGO BED.



87323-LEE8-E00

8

⚠ WARNING



Do not sit on or use tail gate as a step.

9

⚠ WARNING



- KEEP HANDS, BODY AND OTHER PERSONS AWAY FROM CLOSING CARGO BOX.
- DO NOT OPERATE THE VEHICLE WITH CARGO BOX UP.

87033-LEE8-E00

10

⚠ WARNING

EXCEEDING VEHICLE'S TOWING LIMIT COULD CAUSE AN ACCIDENT.

REDUCE SPEED WHEN TOWING A TRAILER.

DO NOT TOW IN REVERSE OVER 5 mph.

HIGH SPEED WILL RESULT IN LOSS OF CONTROL.

READ OWNER'S MANUAL FOR DETAILS.

- MAXIMUM TONGUE WEIGHT: 50 KG (110 LBS).
- MAXIMUM TOWING CAPACITY: 550 KG (1212 LBS).

87040-LEE8-E00



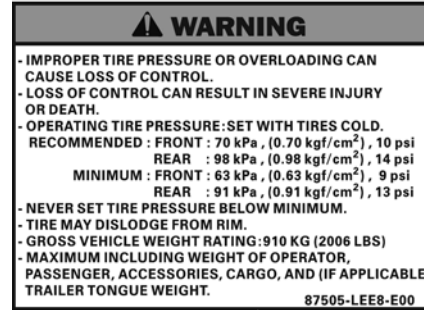
Introduction.

Warning Labels Location

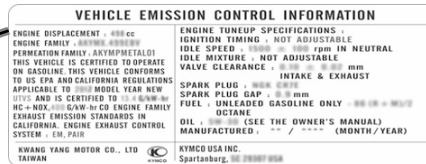
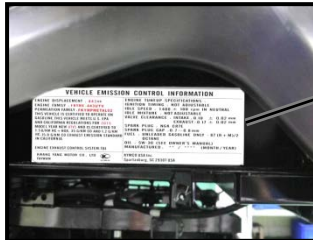
11



12



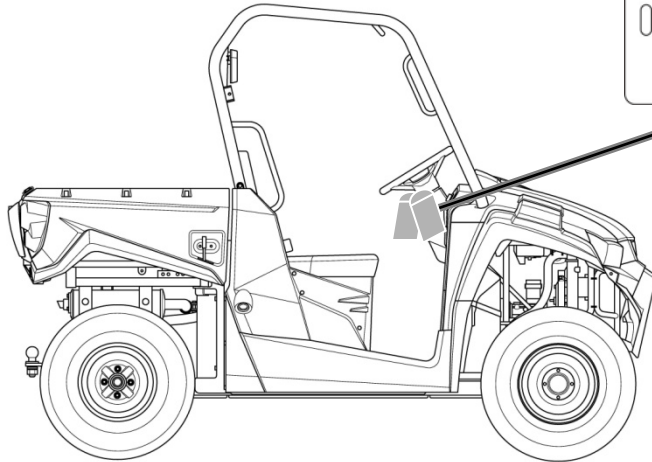
13



Introduction.

Warning Hang Tag Location

14

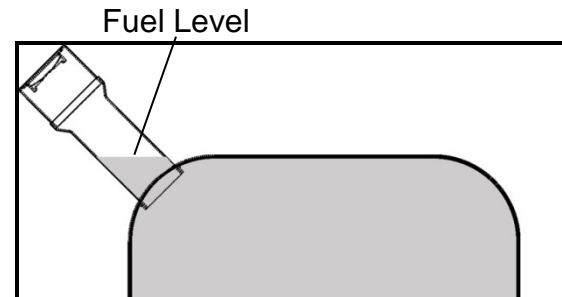
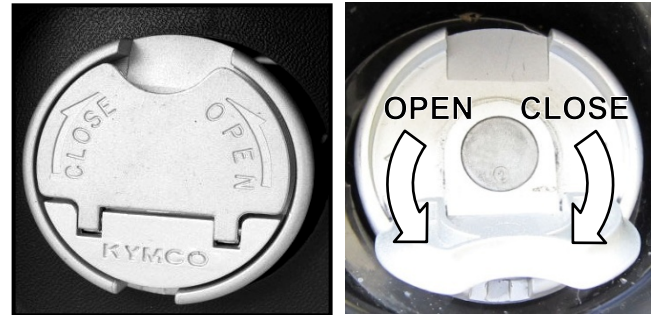


Features and Controls

Fuel Level Inspection/Refilling

Check to make sure fuel level is sufficient. If the fuel level indicator is flashing “E”, refill with nonleaded gasoline as soon as possible.

1. Turn the tank cap counterclockwise with hand to remove the cap.
2. Fill with nonleaded gasoline.
3. Turn the fuel tank cap clockwise to replace the cap.



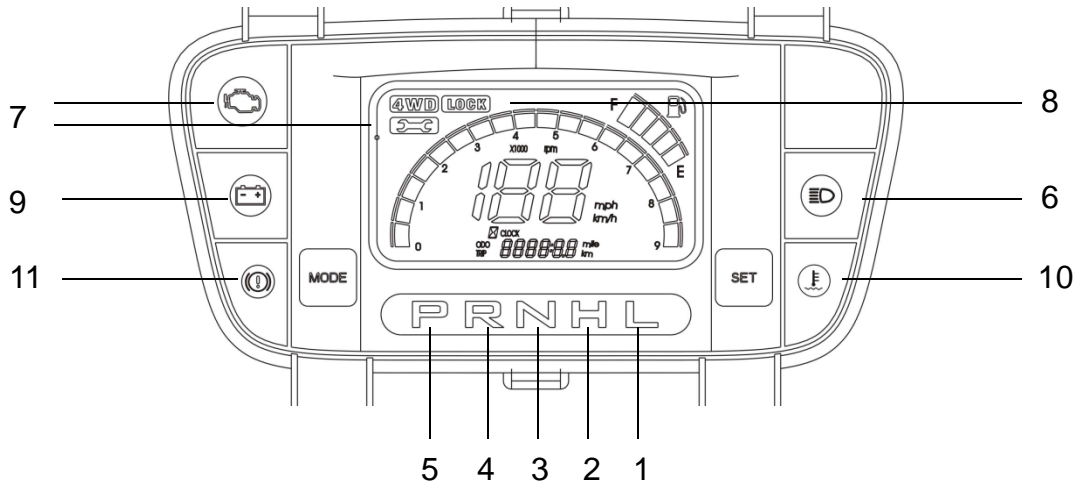
Be sure to stop the engine before refilling. Never refill the fuel tank near open flames or sparks. Do not overfill the fuel tank (See fuel level above).

Features And Controls

Indicator Lights

The indicator lights on the console display:

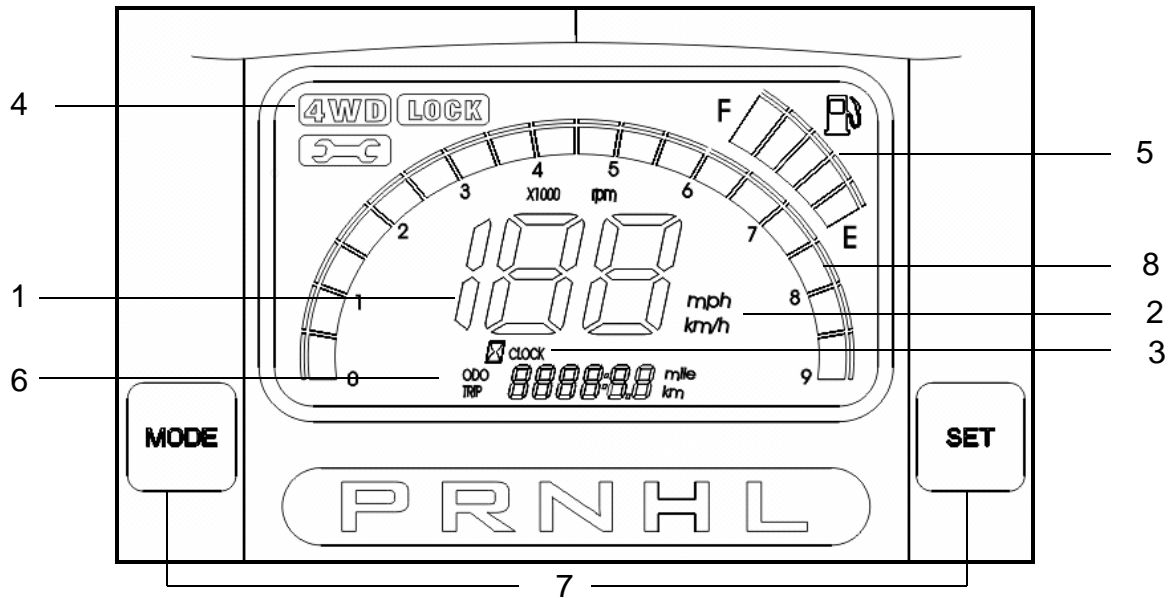
1. Lower gear
2. High gear
3. Neutral gear
4. Reverse gear
5. Parking gear
6. High Beam indicator light
7. FI system indicator light
8. Differential lock indicator light
9. Battery low voltage indicator light
10. High coolant temperature indicator light
11. Parking brake indicator light



Features And Controls

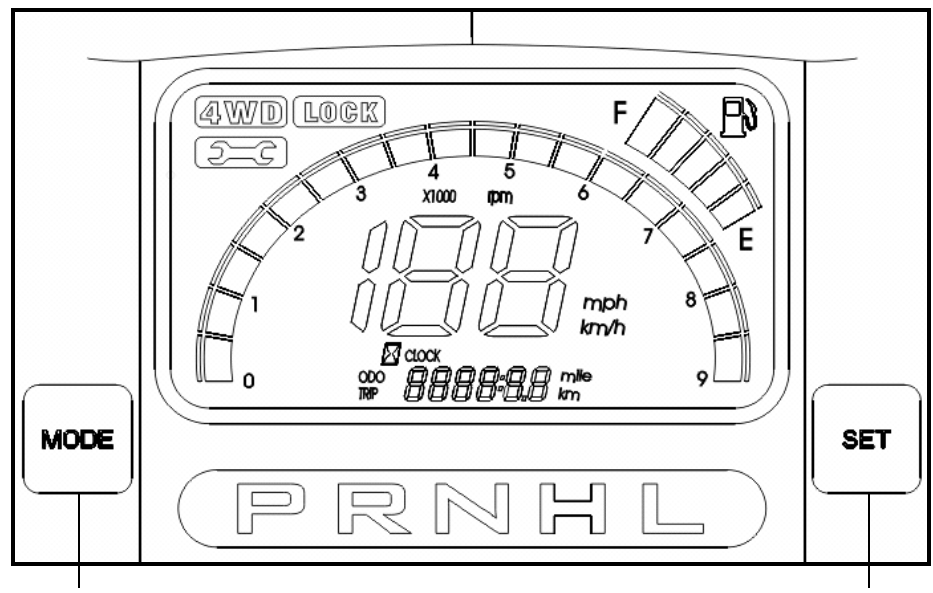
Instruments and Indicators

1. Speedometer
2. Km/h or Mph
3. Clock
4. 4WD
5. Fuel Gauge
6. ODO Meter
7. Adjust Button
8. Engine Tachometer



Features And Controls

Operation Instructions for Multi-meter

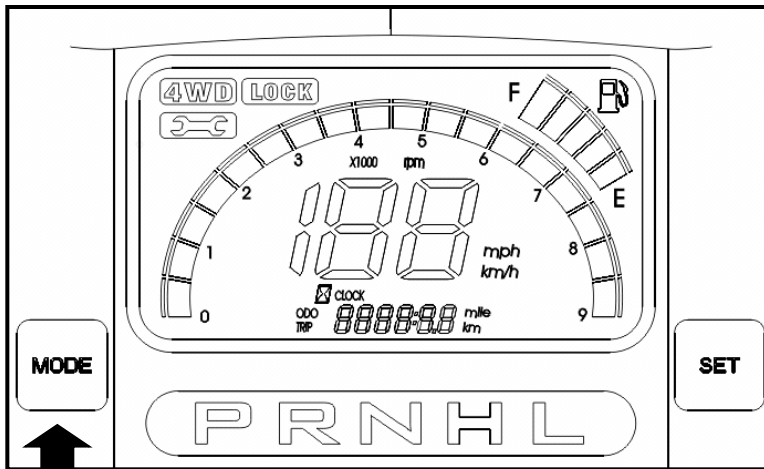


Button A (MODE)

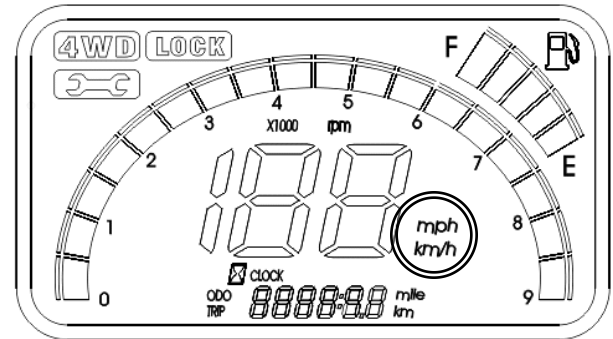
Button B (SET)

Features And Controls

Operation Instructions for Multi-meter: Changing the mode from mph or km/h



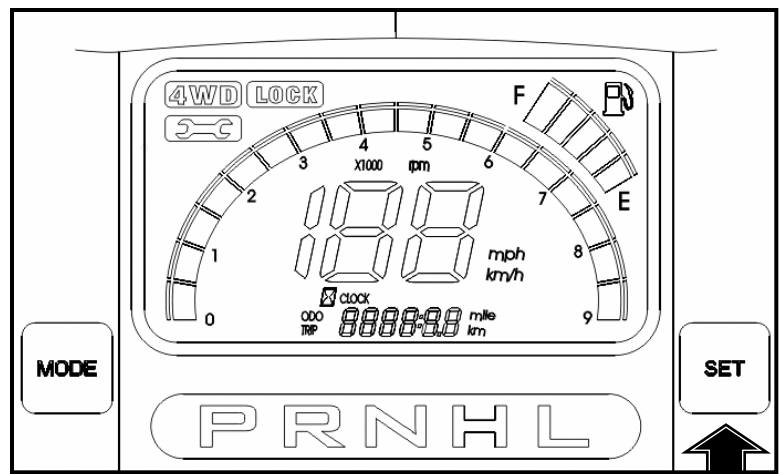
Button A (MODE)



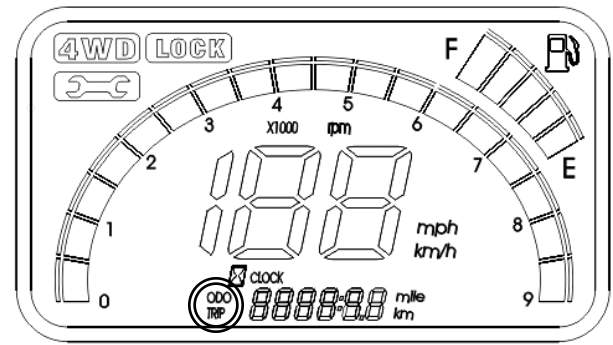
Press and hold button "A" for 2 seconds

Features And Controls

Operation Instructions for Multi-meter: Shift function from ODO or TRIP



Button B (SET)

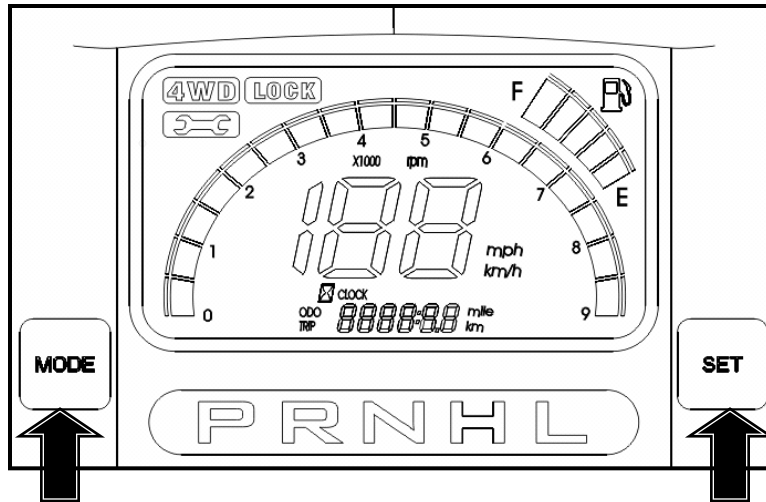


Press and hold button "B" for 2 seconds

Features And Controls

Operation Instructions for Multi-meter:

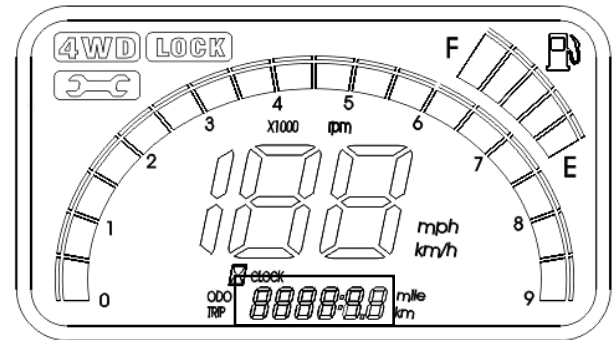
To reset “Trip meter” to zero



Button A (MODE)

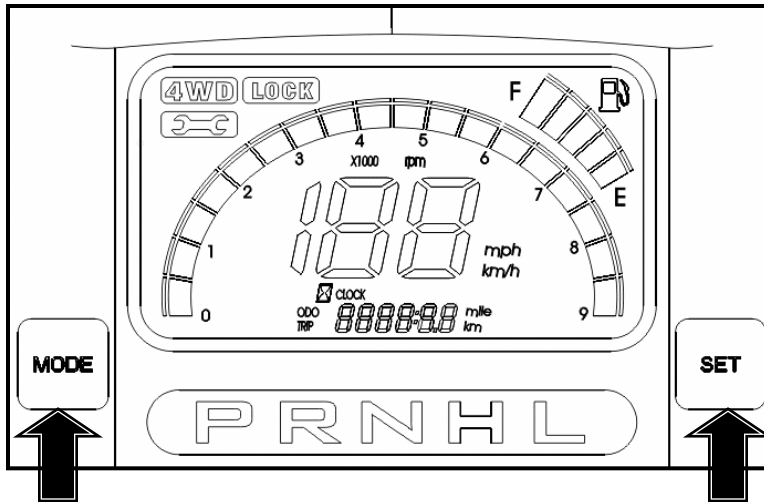
Button B (SET)

Press and hold button “A” and “B” buttons simultaneously for 2 seconds



Features And Controls

Operation Instruction for Multi-meter: Setting the clock.



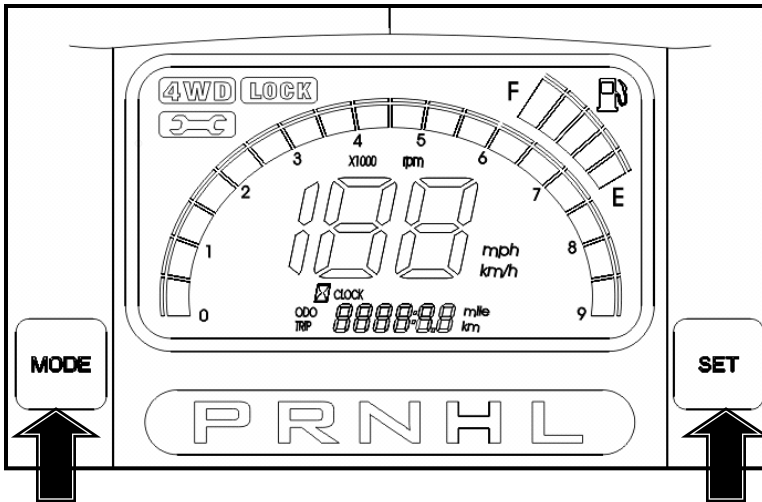
Button A (MODE)

Button B (SET)

Press and hold button “A” and “B” for 5 seconds when set in the ODO mode. The clock will begin to flash. (continued)

Features And Controls

Operation Instruction for Multi-meter



Button A (MODE)

Button B (SET)

When the clock is flashing, press button “B” to set the hour. Press button “A” to adjust the minutes. Wait for 2 seconds to finish time setting.

Features And Controls

Auxiliary Power Outlet

The power outlet provides 12-volts DC that may be used to power an auxiliary light or other optional 12 volt accessories.

Seat Belt Lamp

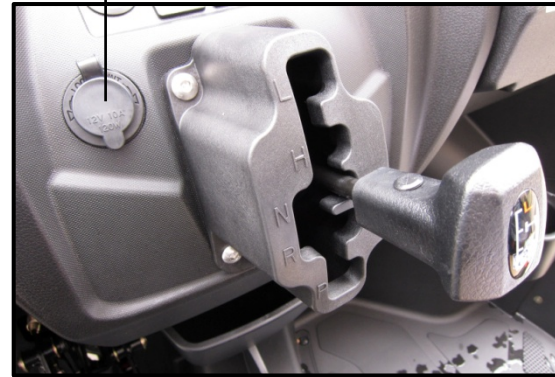
The seat belt lamp will remain lit while the engine is running to alert you to fasten the seat belt.

Rear Differential Lock Switch

(Applies to “Turf” model only)

When riding in two-wheel drive condition, this switch can lock the rear differential to make both of the rear wheels turn at the same speed at all times.

Auxiliary Outlet



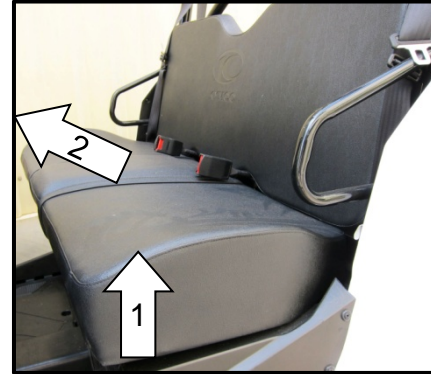
Seat Belt Lamp

Rear Differential Lock Switch

Features And Controls

Seat Removal and Installation

- Pull up on front of seat and push toward the front of vehicle.
- Install the seat by sliding the tabs into the rear of the seat base.
- Push down firmly on the front of the seat until the pins are fully seated into the grommets.



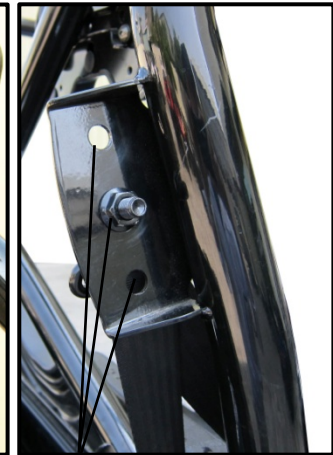
Seat Belts

Your **UXV450i** is equipped with lap-shoulder seat belts for the operator and passenger. The seat belts should be used by the driver and passenger each time the UTV is driven.

If you want to adjust your seat belt height. Remove the bolt and nut, adjust position to the desired height. Then tighten the bolt and nut.



Seat Belts



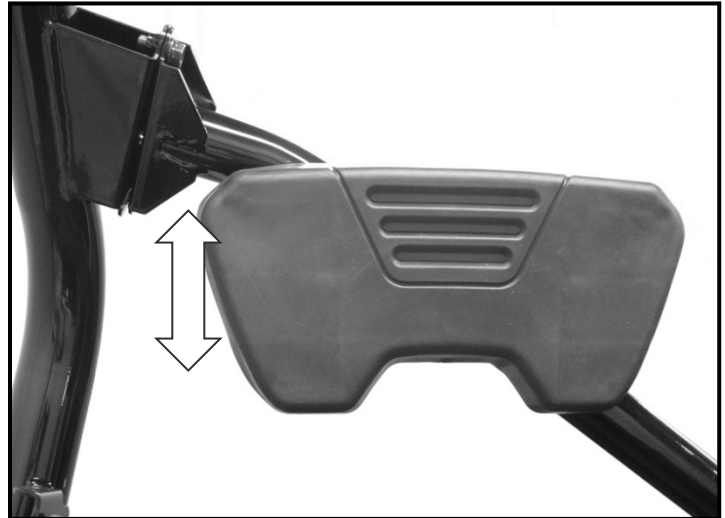
Three positions

Features And Controls

Head cushion adjustment

If you want to adjust the head cushion height, remove the four bolts and adjust to the position you need.

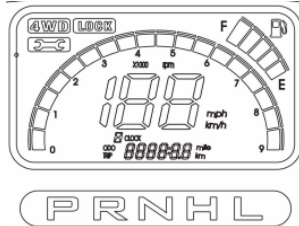
Then tighten the bolts.



Features And Controls

Gear Selector

- 1.Lower Gear
- 2.High Gear
- 3.Neutral Gear
- 4.Reverse Gear
- 5.Parking Gear



To change gears, **stop the vehicle and wait for the engine to return to idle speed**, push the button and move the lever to the desired gear.

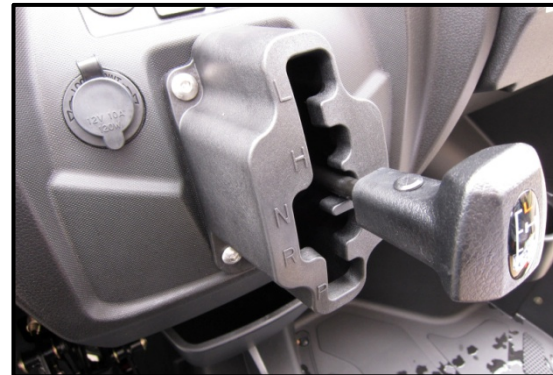
Do not attempt to shift gears with engine speed above idle or while the vehicle is moving.

Always place the transmission in gear with the parking brake locked whenever the vehicle is left unattended.

Note: When shifting between high and neutral gear, the button does not need to be pressed .

Maintaining shift linkage adjustment is important to assure proper transmission function .

See your dealer if you experience any shifting problems.



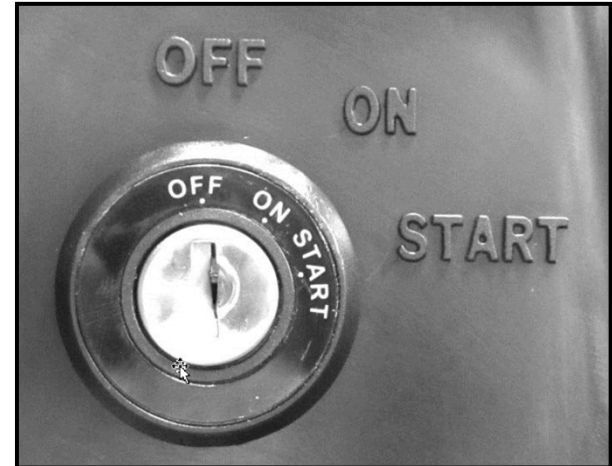
Features And Controls

Switches

Ignition Switch

The ignition switch is a three-position, key-operated switch, The key can be removed from the switch when it is in the **OFF** position.

- ON:** Electrical circuits are on
Electrical equipment can be used.
- OFF:** Engine off .All electrical circuits are off except Acc.12V
- START:** Electrical starter is engaged by holding ignition switch key in this position. Upon release ,the key will return to the **ON** position.



Features And Controls

Switches

Light Switch

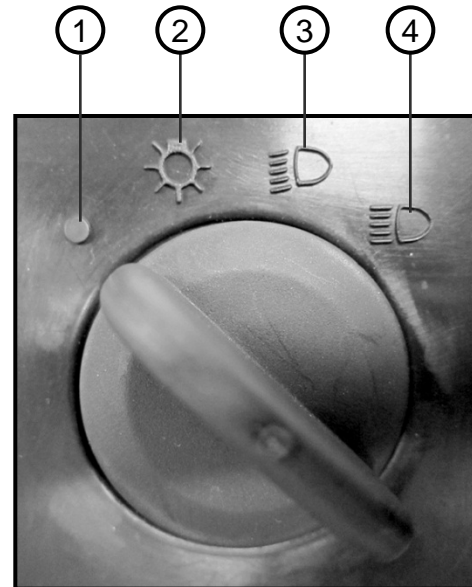
- The ignition switch key must be in the **ON** position to operate the headlights.
- The switch has 4 positions.

1. Light off - At this position , light is turn off.

2. Position light - At this position , light is turn off

3. LO Headlight Beam- When you select this position . low beam will illuminate.

4. Hi Headlight Beam- When you select this position .high beam will illuminate .High beam indicator light will turn on.



Features And Controls

Switches

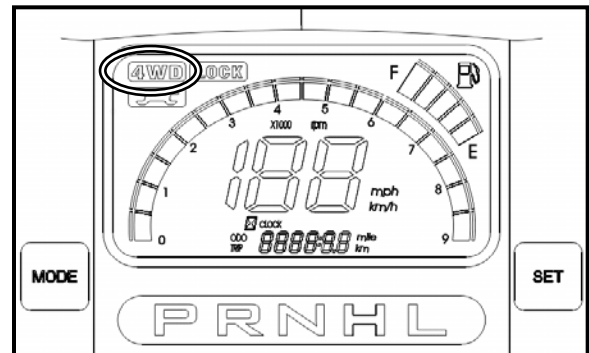
Drive Select Switch

The 2WD/4WD allows the operator to operate the vehicle in either two-wheel drive (rear wheel) or four wheel drive(all wheels) For normal riding on flat, dry, hard surfaces, two-wheels drive should be sufficient. In situations when additional traction is necessary, four-wheel drive would be the desired choice.

To either engage or disengage the front wheels, turn the switch to the 4WD position or the 2WD position.

Drive Select Indicator

Displays 4WD when selected by the 4WD drive selector switch.



Features And Controls

Differential Lock mode

The vehicle is equipped with a lockable differential that allows the operator to choose between an open differential or a closed differential in low traction situations. Turf version of model is equipped with both front and rear differentials.



The different functions as below charts.

Standard Version Model	Front Left & Right Wheels	Rear Left & Right Wheels
2WD	Different speed when vehicle turning.	Same speed when vehicle turning.
4WD	Different speed when vehicle turning.	Same speed when vehicle turning.
4WD LOCK	Same speed when vehicle turning.	Same speed when vehicle turning.



⚠ WARNING

NEVER EXCEED 10 MPH (16 KPH) WHEN DIFFERENTIAL IS LOCKED. LOSS OF CONTROL AND SEVERE INJURY OR DEATH MAY RESULT AT HIGH SPEEDS WHEN DIFFERENTIAL IS LOCKED.

Notice: Damage to the differential can occur if it is engaged while the vehicle is traveling at high speeds or while the rear wheels are spinning. Slow the vehicle to nearly stopped before engaging the differential.

Features And Controls

Differential Lock mode

Turf Version Model	Front Left & Right Wheels	Rear Left & Right Wheels	
2WD	Different speed when vehicle turning.	Same speed when vehicle turning.	 Lock the rear differential
		Different speed when vehicle turning.	 Unlock the rear differential
4WD	Different speed when vehicle turning.	Same speed when vehicle turning.	
4WD LOCK	Same speed when vehicle turning.	Same speed when vehicle turning.	

⚠ WARNING

NEVER EXCEED 10 MPH (16 KPH) WHEN DIFFERENTIAL IS LOCKED. LOSS OF CONTROL AND SEVERE INJURY OR DEATH MAY RESULT AT HIGH SPEEDS WHEN DIFFERENTIAL IS LOCKED.

Notice: Damage to the differential can occur if it is engaged while the vehicle is traveling at high speeds or while the rear wheels are spinning. Slow the vehicle to nearly stopped before engaging the differential.

Features And Controls

Steering Wheel Adjuster (1)

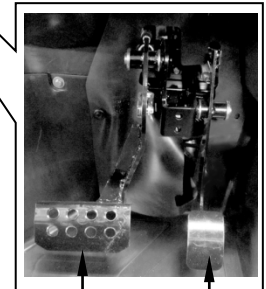
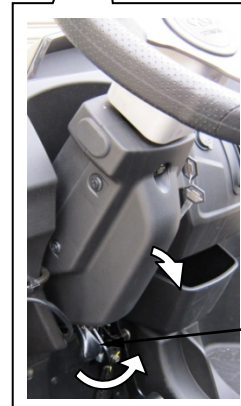
Pull steering wheel adjuster(1) to adjust the position of steering wheel.

Brake Pedal (2)

Step on the brake pedal to slow or stop or stop the vehicle.

Throttle Pedal (3)

Step the pedal down slightly to increase engine speed.
Always check the throttle pedal in the original position before starting the engine. Make sure there's adequate throttle pedal free play.



(1)

(2)

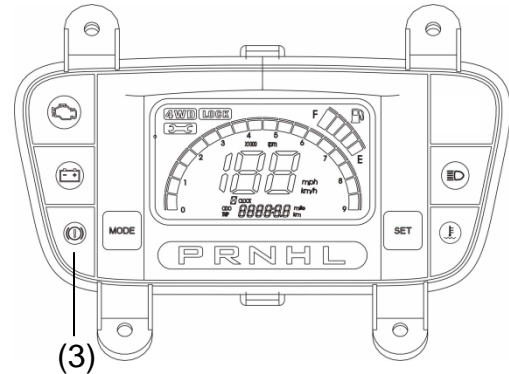
(3)

Features And Controls

Parking Brake(3)

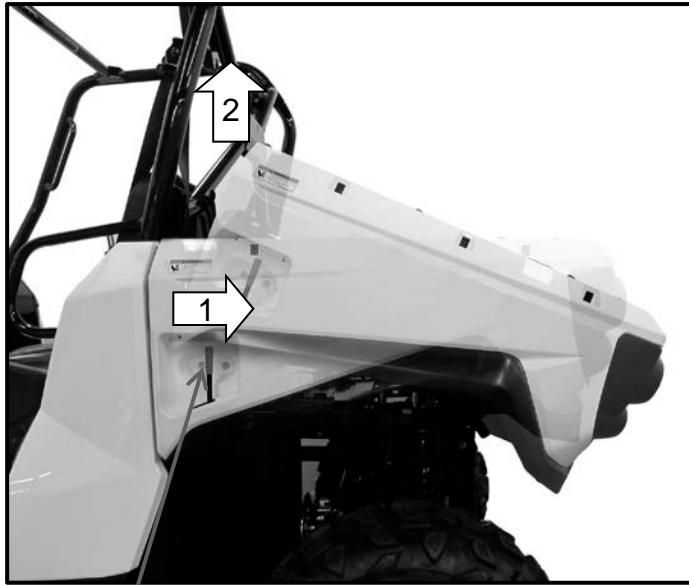
To engage the parking brake, pull the parking brake lever outward until resistance is felt. Make sure the parking brake lever is functioning properly before each operation.

Note: If you forget to release the parking brake, an alarm will sound above 5 km/h, to help prevent damage to the brake system.



Features And Controls

Cargo Bed (Lift and lower the cargo bed)



Cargo Bed Lever

To lift

Push the cargo bed release lever to right side, then slowly lift up cargo bed until it stops.

To lower

Lower the cargo bed slowly to its original position and be sure the it is locked into place.

Maximum load in cargo bed: 440 lbs or 200 kg

Features And Controls

Cargo bed Tailgate (open)



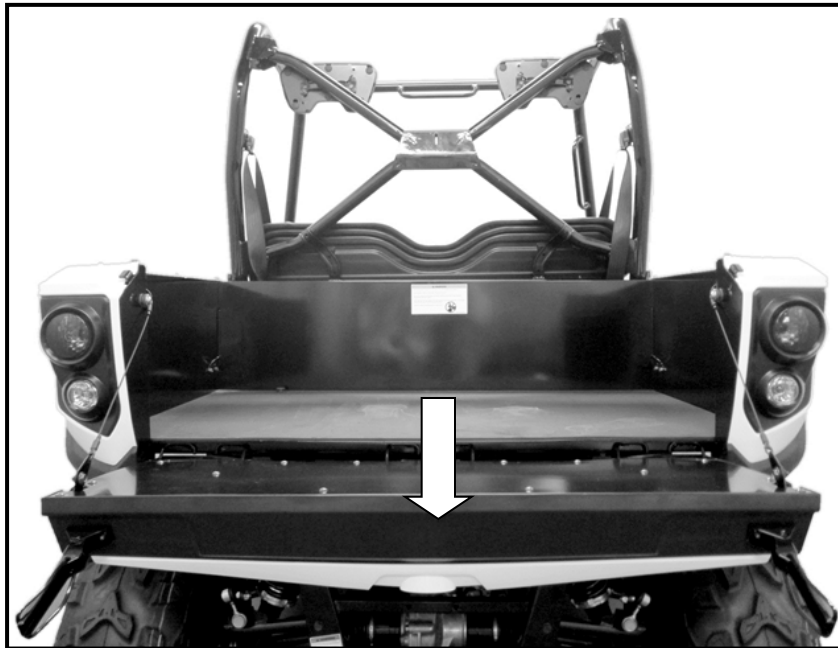
To open

Unlock the latches (1) , and then lower the tailgate.



Features And Controls

Cargo bed tailgate (close)



To close

Place the tailgate in the original position, and then hook the latches.

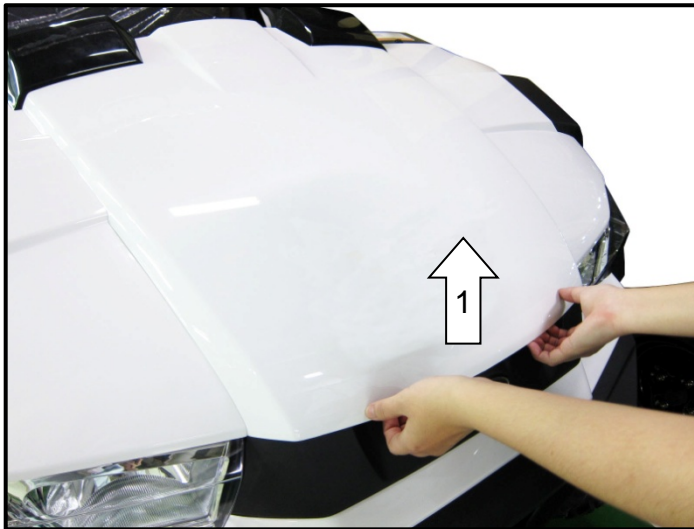
⚠ WARNING	
	Do not sit on or use tail gate as a step.

⚠ WARNING
Never drive your UTV with the tailgate open or the cargo bed in the tilted position. This could cause instability which could lead to a tip over or an accident.
Tilting the cargo bed exposes the exhaust system. Always keep combustible materials away the exhaust system. Exposure to the exhaust system's hot components could result in a fire.

Features And Controls

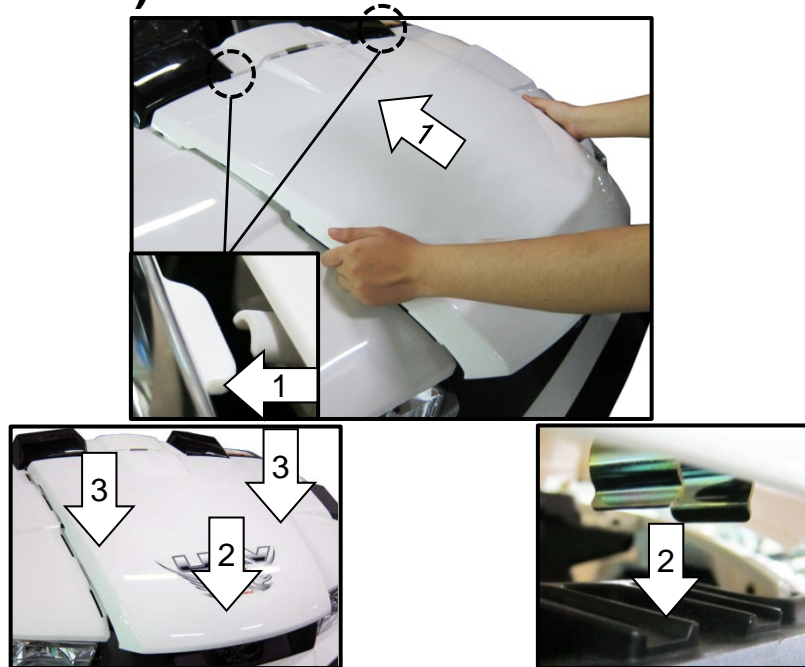
Hood (To Open)

Pull up the hood from the front end.
Then remove the hood.



Features And Controls

Hood (To Install)



Insert the tabs(1) and tap the tabs(2)(3) to correct position, then check tightness.

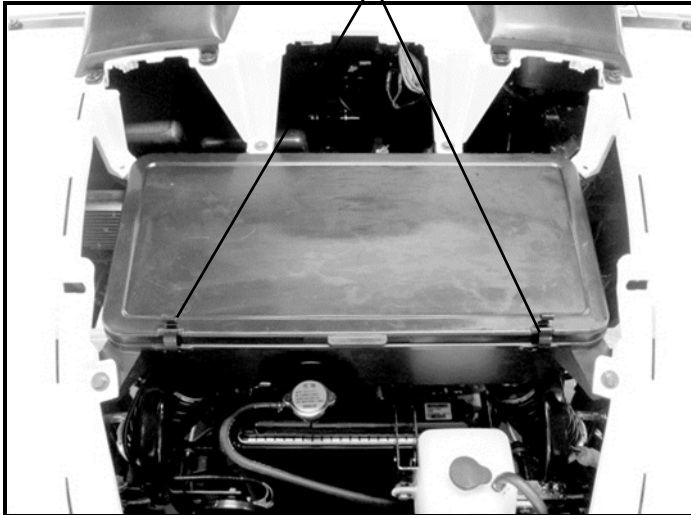
Notice: Install incorrectly could cause the hood loosen and fall off when vehicle being driven.

Features And Controls

Front Compartment (To Open)

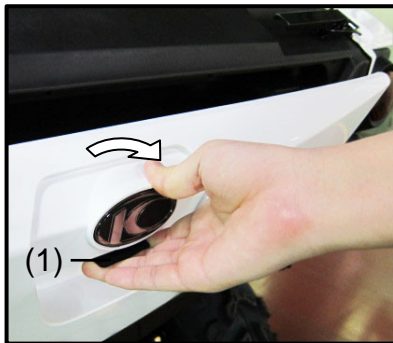
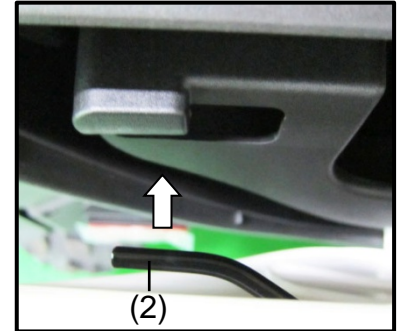
Release the latches and open the front compartment.

Latches



Features And Controls

Rear Storage Compartment



(To open) Pull the handle(1) and open the rear compartment.

(To close) Pull the handle, push ends of cover, release and push the handle to make sure latches(2) engage with the grooves firmly.

Notice: Install incorrectly could cause the latch loosen and the rear compartment to open.

How to operate

Daily Safety Checks

Check the following items each day before operation.

1. **Fuel**-----Enough fuel in tank, no leaks.
2. **Engine Oil**-----Engine oil level is within the standard(when engine is cold),no leaks.
3. **Tires** -----Air pressure(when cold)and check tires crack, damage or abnormal wear. Check for any imbedded stones or other foreign particles in tread.
4. **Front wheel Air pressure** :*0.7kgf/cm²;10psi* .
5. **Rear wheel Air pressure** :*0.98kgf/cm²;14psi* .
6. **Headlight & other indicate light** ----- Check the operation if they are normal.
7. **Brake/Brake oil level** ----- Check the operation and oil level is normal.
8. **Coolant** -----Coolant level between level lines(when engine is cold),no leaks.
9. **Front gear case & Rear gear case** -----No oil leak.
10. **EFI system** ----- Check Engine lamp is not illuminated.

How to operate

Start the Engine



WARNING

Never run the vehicle in a closed area, such as a garage. Exhaust gases contain carbon monoxide, a colorless, odorless, poisonous gas. Breathing exhaust gas leads to carbon monoxide poisoning, asphyxiation, and death.



1. Fasten the seat belts, helmets and eyes protections. (both operator and passenger)
2. Set the parking brake.
3. Depress the foot brake and put the gear shift lever in the “N” (neutral) position.
4. Turn the ignition switch clockwise to the **START** position; then when the engine starts, release to the key to the **ON** position with foot on the brake.

Note: If the gear shift lever is not in the “N” (neutral) position, you **MUST** apply the brake then the engine can be started.

How to operate

Driving Safely (Driving procedures)

1. Sit on the seat and fasten the seat belt.
2. Wear the helmet and eyes protection when driving.
3. After starting the engine and allowing it to warm up , shift the transmission into gear.
4. Check your surroundings and determine the path of travel.
5. Release the parking brake.
6. Keeping both hands on the steering wheel, slowly depress the throttle with your right foot and begin driving. Vehicle speed is controlled by the amount of throttle opening & transmission shifting.
7. Drive slowly. Practice maneuvering and using the throttle and brakes on level surfaces.
8. Always install the safety net before driving.

Safety net



How to operate

Start the Engine



CAUTION

Do not keep running the starter motor too long otherwise -- the starter motor may overheat causing severe damage.

Braking/Stopping

Always allow plenty of room and time to stop smoothly. Sometimes quick stops are inevitable' so always be prepared. Whenever you are stopping quickly, do this:

1. Release the accelerator, then press the foot brake pedal to apply the brake.
2. If the wheels lock, release them for a second then apply them again .On surfaces such as ice, mud or loose gravel' pump the brake pedal rapidly.
3. Never ride the brake .Even maintaining minimal pressure on the brake pedal will cause the brake pads drag on the disc and may overheat the brake fluid.

How to operate

Parking

Parking vehicle follows the rules below:

1. After the vehicle stops, shift into neutral gear.
2. Set the parking brake.
3. Turn off the ignition key.
4. If you have to park on the hill, shift to low gear, set the parking brake, and block the wheel on the downhill side.

Driving Downhill

1. Hold both hands on the steering wheel make the vehicle stable.
2. Avoid steep hills.
3. Before driving down the hill, shift into low gear and release the accelerator to allow maximum engine brake. Do not use 4 wheel drive when driving down the hill. Engine braking can cause the front wheels to slide reducing steering control.

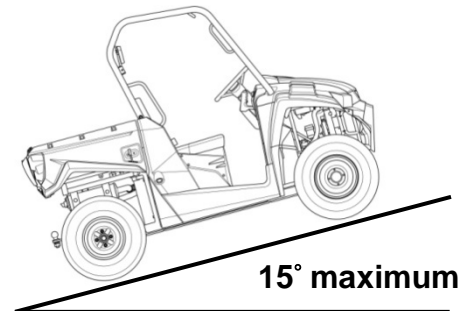
How to operate

Driving Uphill

whenever driving uphill, follow these precautions:

1. Always travel straight uphill.
2. Avoid steep hills (15° maximum)
3. Keep both feet on the floor.
4. Proceed at a steady rate of speed and throttle opening.

**NEVER OPERATE UP OR
DOWN HILLS STEEPER
THAN 15°**



How to operate

Crossing Water

UXV450i can only operate in water up to its floorboard. Stay away from fast flowing rivers. This vehicle tires can be buoyant. In deep water, the vehicle may lose traction due to floating.

1. Physically check the depth and current of the water, especially if you can not see the bottom. Also, check for boulders, logs, or any other hidden obstacles.
2. Keep speed slow while maintaining momentum.
3. Make sure you have a way out on the other side of the water.
4. Once you have driven pass the water, briefly apply the brakes to make sure they work.

How to operate

Driving in Reverse

Follow these guidelines below when operating in reverse gear:

1. Back slowly.
2. Apply the brakes lightly for stopping.
3. Avoid turning at sharp angles.
4. Always avoid backing downhill.
5. Never open the throttle suddenly while backing.
6. Always inspect left and right fields of vision before backing.

Emission Control System

Crankcase Emission Control System

This engine is equipped with a closed crankcase system .
Blow-by gases forced back to the combustion chamber by the intake system.
The system does not allow the blow-by gases to enter the atmosphere.

Exhaust Emission Control System

The emission from the exhaust of this vehicle are controlled by engine design, including factory-set fuel delivery and ignition. KYMCO Exhaust Emission Control System including catalytic converter system. Please do not change any KYMCO design.

Noise Exhaust Emission Control System

Do not modify the engine ,intake or exhaust components, as doing so may affect compliance with state and local noise level requirements.

Emission Control System

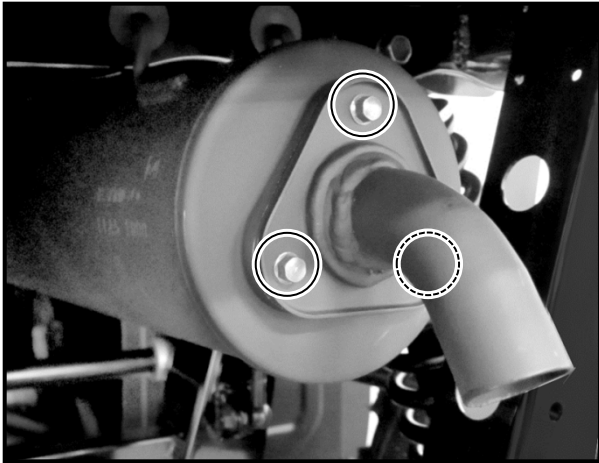
Spark Arrester

Your UXV 450i has a spark arrester.

The spark arrester be installed and functional when the vehicle operated on public lands.

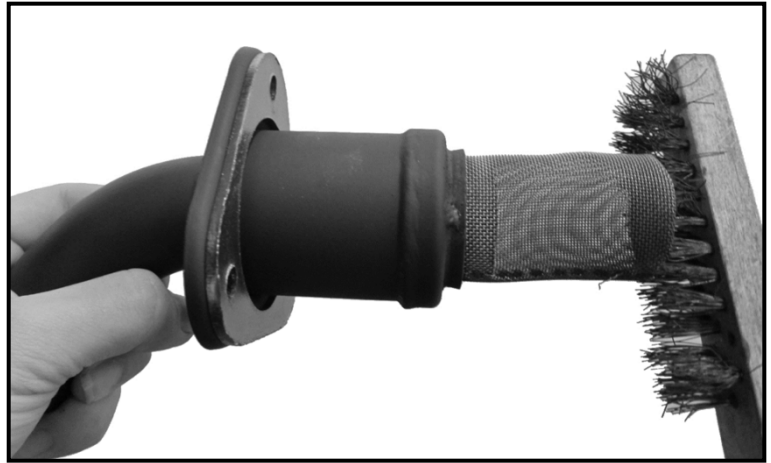
Remove method

remove 3 bolts



Cleaning method

Use the iron brush cleaning carbon on the spark arrester .



Maintenance And Lubrication

Engine Oil

Always check and change the oil at the OWNER MANUAL standard intervals.

- 1.Position the vehicle on the level ground.
- 2.Start the engine and let it idle for 20~30seconds.
- 4.Add fresh oil into the oil tank .

Make sure the engine oil at the specified level.
Add oil as necessary. Check for leaks.

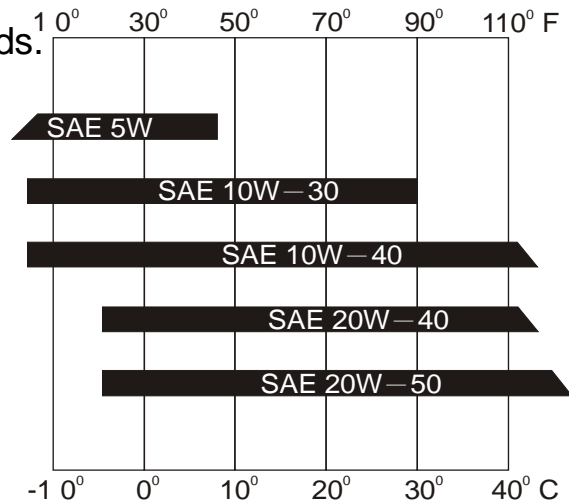
Oil quantity:

Engine oil capacity: 2.85L (3.02 US qt.)

Engine oil changed: 2.2L (2.3 US qt.)

Engine oil changed

with filter changed: 2.4L (2.5 US qt.)



Recommended engine oil classification: API Service SJ type or higher

Maintenance And Lubrication

Engine Oil

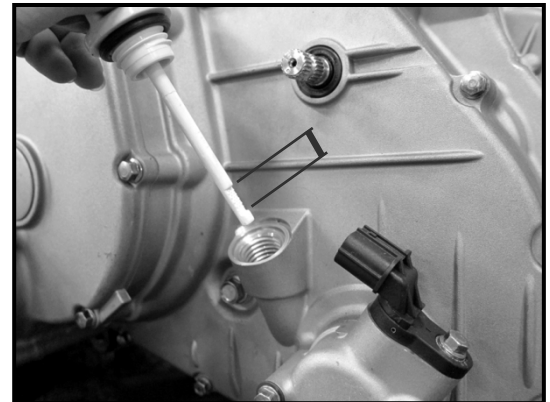
Engine oil level measurement

- A. Place the machine on a level place.
- B. Warm up the engine for several minutes and stop it.
- C. Unscrew the dipstick/filler cap and check the oil level should be within the standard range.
- D. Insert the dipstick and thread it in.

If the level is low, add oil to raise it to the proper level.

NOTE:

Wait a few minutes until the oil level settles before checking.



Maintenance And Lubrication

Engine oil replacement

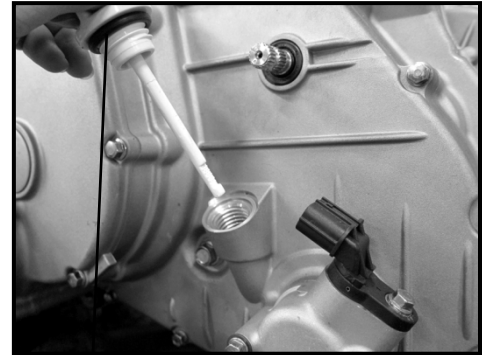
1. Place the machine on a level place.
2. Warm up the engine for several minutes and stop it.
3. Place a container under the engine.
4. Remove the oil fill cap (1) and oil drain bolt (2) to drain the oil.
5. Add oil to raise it to the proper level.
6. Insert the dipstick and thread it in.

CAUTION:

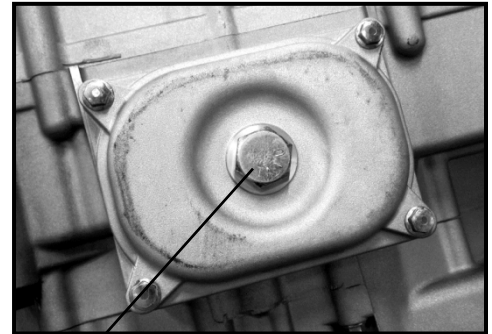
Be sure no foreign material enters the crankcase.

CAUTION:

When removing the oil filter cap, the compression spring, oil strainer and O-ring will fall out. Take care not to lose these parts.



(1) oil fill cap



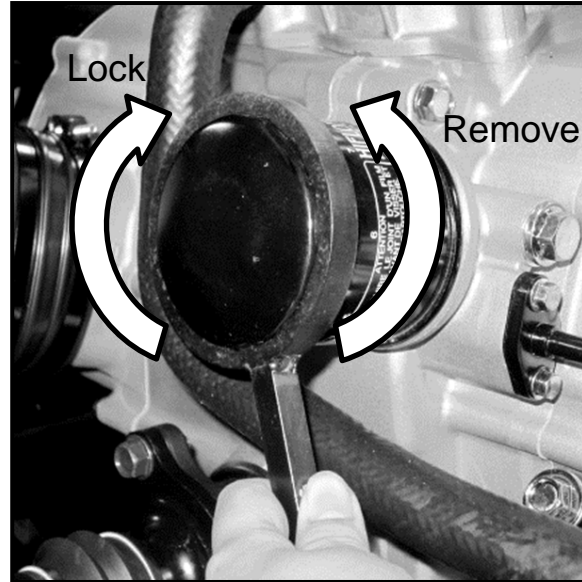
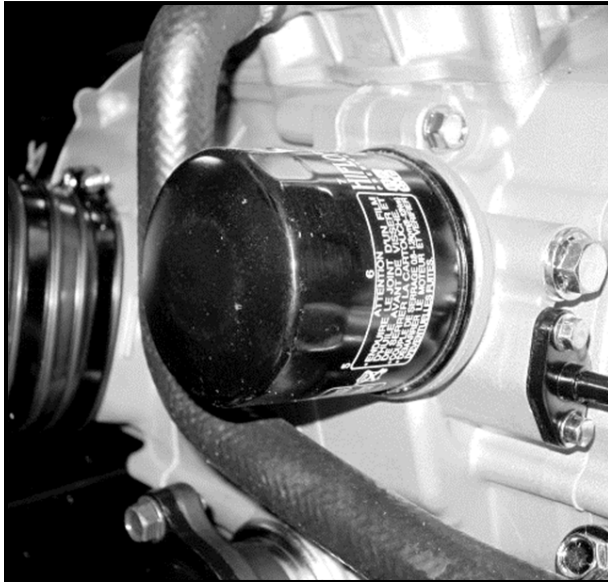
(2) oil drain bolt

Maintenance And Lubrication

NOTE:

Skip steps E to I if the oil filter cartridge is not being replaced.

Remove the oil filter cartridge with an oil cartridge wrench.



Maintenance And Lubrication

Changing the front gear box oil

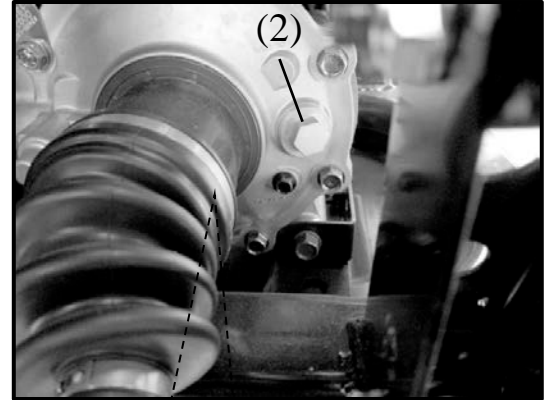
1. Place the vehicle on the a level surface.
2. Place a container under the front gear box to collect the used oil.
3. Remove the front gear box oil drain bolt(1) and front gear box oil filler bolt (2).
4. Install the front gear box oil drain bolt(1) and then tighten it to the specified torque.
5. Fill the front gear box oil with recommended oil.
6. Install the front gear box oil filler bolt(2).

Tightening torque

Drain bolt : 5 N-m (0.5 kgf-m)

Recommended oil : SAE 80

Oil quantity : Periodic oil change 0.25L

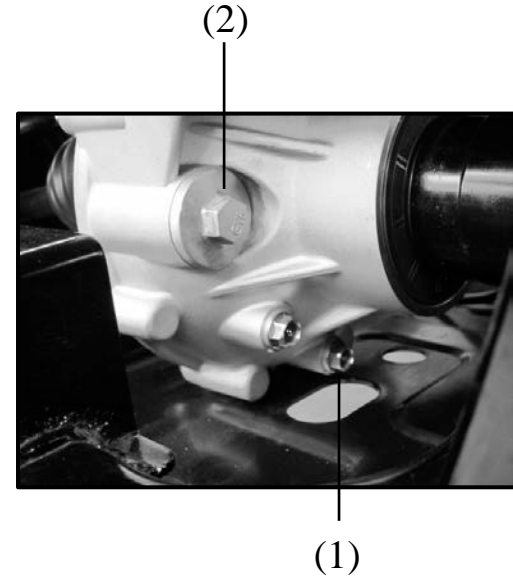


(1)

Maintenance And Lubrication

Changing the rear gear box oil

1. Place the vehicle on the a level surface.
2. Place a container under the rear gear box to collect the used oil.
3. Remove the rear gear box oil drain bolt(1) and rear gear box oil filler bolt (2).
4. Install the rear gear box oil drain bolt(1) and then tighten it to the specified torque.
5. Fill the rear gear box oil with recommended oil.
6. Install the rear gear box oil filler bolt(2).



Tightening torque

Drain bolt : 5 N-m (0.5 kgf-m)

Recommended oil : SAE 80

Oil quantity : Periodic oil change 0.23L

Note: UXV 450i TURF model equips rear differential same with front gear box.

Maintenance And Lubrication

BRAKE FLUID INSPECTION

Check if the fluid level is between upper and lower level.

WARNING

POTENTIAL HAZARD

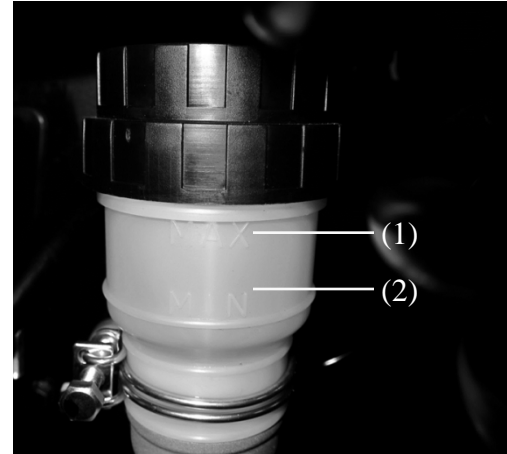
Brake fluid contacting the skin or eyes.

WHAT CAN HAPPEN

May cause irritation.

HOW TO AVOID THE HAZARD

Avoid contacting brake fluid with the skin or eyes. In case of contact, flush thoroughly with water and call a doctor if your eyes were exposed.



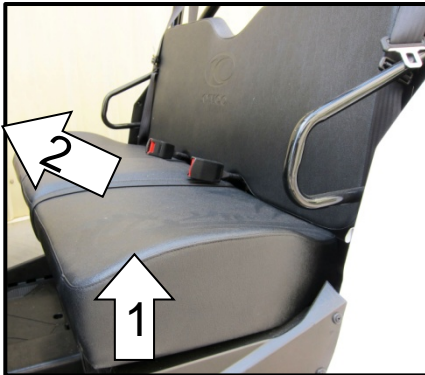
- (1) Upper level mark MAX
- (2) Lower level mark MIN

Maintenance And Lubrication

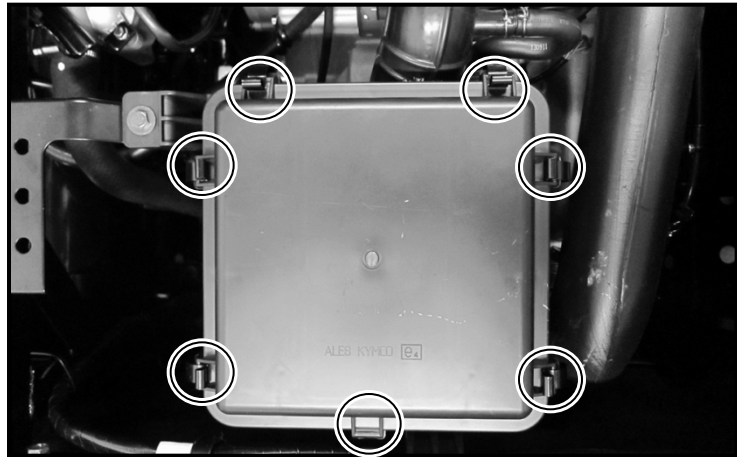
Air Cleaner

Remove the seat.

Loosen the air cleaner latches.



Seat

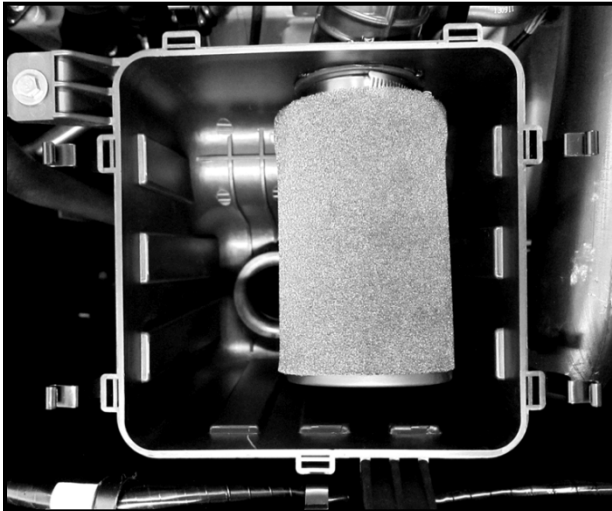


Latches

Maintenance And Lubrication

Air Cleaner

Remove air cleaner cover.
Remove air filter element.



Using high pressure air to clean air filter element .
Inspect the air filter element and replace it if damaged.



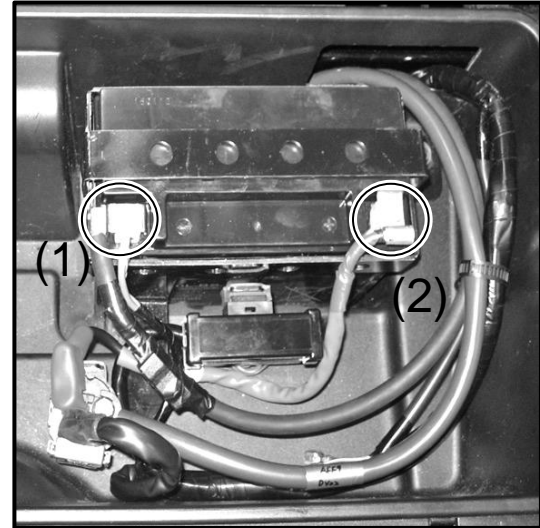
Maintenance And Lubrication

Battery Remove

1. Make sure the ignition switch is **OFF**.
2. Remove the hood.
3. Disconnect the negative (-) terminal lead (1) from the battery first, then disconnect the positive (+) terminal lead (2).
4. Remove the battery.

Battery installation

1. Install in the reverse order of removal.
2. After installing the battery, check if the battery cables are routed correctly.



NOTE:

First connect the positive (+) cable and then negative (-) cable to avoid short circuit.

Maintenance And Lubrication

Fuse Replacement

The fuse box stored beside the battery.

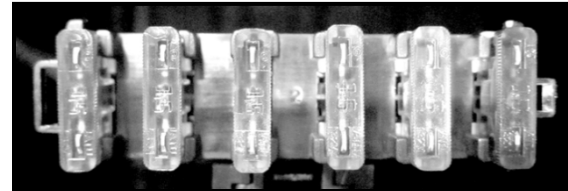
To replace a fuse:

1. Make sure the ignition switch is **OFF**.
2. Open the fuse box cap.
3. Pull the old fuse out.
4. Push the new fuse in to the fuse holder.
5. Close the fuse box cap.

CAUTION:

To prevent accidental short-circuiting, turn off the main switch when checking or replacing a fuse.

(1) (2) (3) (4) (5) (6)



(6) FAN MOTER-----10A

(5) IGNITION-----15A

(4) LIGHT-----15A

(3) DC12V POWER-----15A

(2) FUEL -----15A

(1) SPARE-----15A

Maintenance And Lubrication

Cooling System Inspection

1. Remove the hood.
2. Check the coolant level in the coolant reservoir when the engine is cold as the coolant level will vary with engine temperature.

The coolant level should be between the full and low marks.

3. If the level is low, remove the coolant reservoir cap, and then add coolant or distilled water to raise it to the specified level.

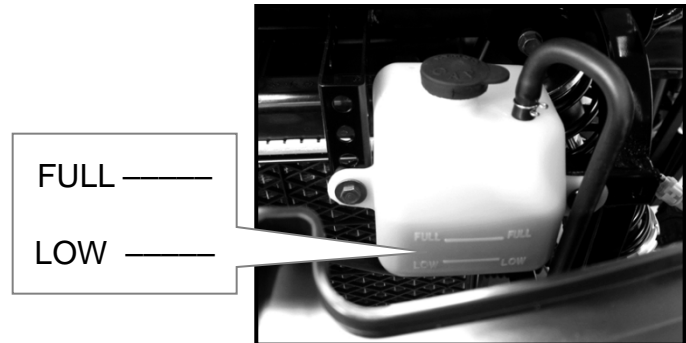
Recommended Coolant Solution

Coolant Mixture Ratio:

Water 50%:Antifreeze 50%(1:1)

NOTE:

A permanent type of antifreeze is installed in the cooling system when shipped. It is colored green and contains ethylene glycol. It is mixed at 50% with water and has a freezing point of -35°C (-31°F)



Maintenance And Lubrication

Wheel Removal

1. Elevate the wheel by placing a suitable stand under the frame.
2. Remove the nuts from the wheel.
3. Remove the wheel assembly.



Wheel Installation

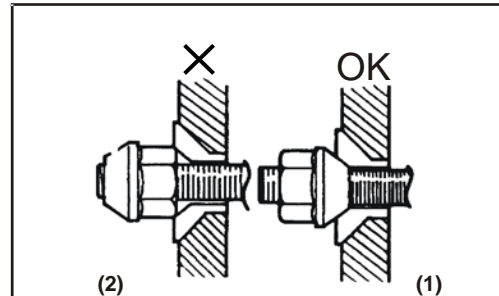
When reinstalling a wheel, tighten the wheel nuts in a crisscross (rather than a circular) pattern.

Wheel nut torque:

Front: 55 N-m (5.5 kgf-m)


Rear: 55 N-m (5.5 kgf-m)

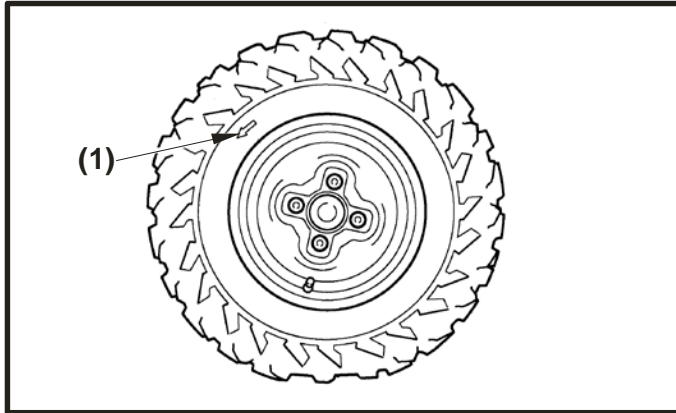
Be sure the tapered side of the wheel nuts face the wheel rim.



Maintenance And Lubrication

NOTE:

The arrow mark  on the tire must point toward the rotating direction of the wheel.



(1) Arrow mark

WARNING

POTENTIAL HAZARD
Installing wheels improperly.

WHAT CAN HAPPEN
A wheel may come loose, possibly leading to an accident.

HOW TO AVOID THE HAZARD
Carefully follow the instructions in this Owner's Manual when installing.

Maintenance And Lubrication

Spark Plug Inspection

The spark plug is an important engine component and is easy to inspect.

The condition of the spark plug can indicate the condition of the engine.

For example, a very white center electrode porcelain color could indicate an intake air leak or carburetor problem for that cylinder.

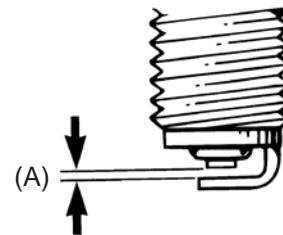
Do not attempt to diagnose such problems yourself.

Instead, take the machine to a KYMCO dealer. You should periodically remove and inspect the spark plug because heat and deposits will cause the spark plug to slowly break down and erode. If electrode erosion becomes excessive, you should replace the spark plug with one of the proper type.

Standard spark plug (NGK): CR7E

Before installing the spark plug, measure the electrode gap with a feeler gauge and adjust to specification.

Spark plug gap: 0.7~0.8 mm



(A) Spark plug gap

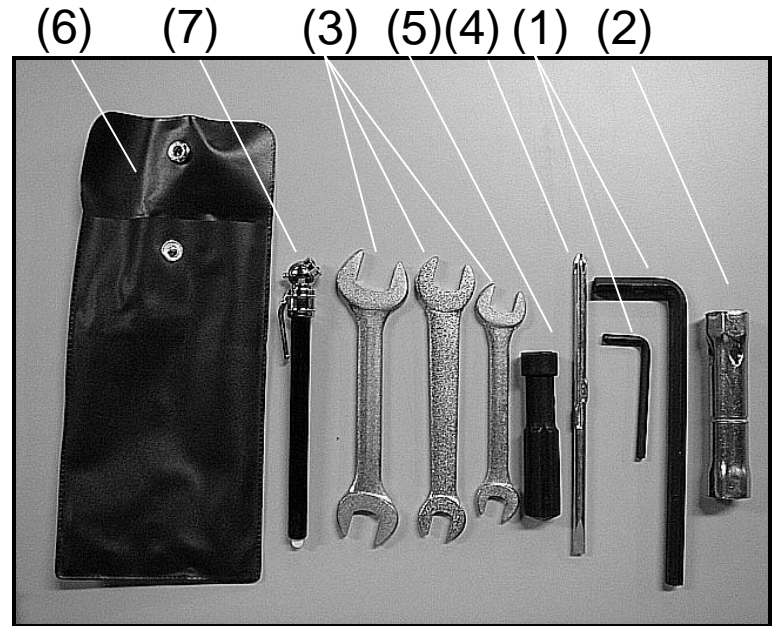
Maintenance And Lubrication

Tool Kit

The tool kit put down location at **Right Glove Compartment** .

The tool kit includes the following items:

- (1) Hexagon wrench
- (2) Spark plug wrench
- (3) 8/12 ; 10/14 ; 17/19 mm wrench
- (4) Screwdriver
- (5) Screwdriver handle
- (6) Tool bag
- (7) Air pressure gauge



Specifications

MODEL UXV450 *i*(OFF ROAD)

DIMENSIONS:

OVERALL LENGTH	106 in(2700 mm)
OVERALL WIDTH	56.69 in(1440 mm)
OVERALL HEIGHT	72.84 in(1850 mm)
SEAT HEIGHT	32.91 in(836 mm)
WHEELBASE	72.00 in(1829 mm)
GROUND CLEARANCE	10.00 in(254 mm)
MINMUN. TURNING RADIUS	157.48 in(4000 mm)

BASIC WEIGHT:

WITH OIL AND FULL FUEL TANK	Standard:515kg Turf Model:551kg
MAX. CARGO BED LOAD	200kg
DRY WEIGHT	490kg
MAX. WEIGHT CAPACITY	360kg

ENGINE:

ENGINE TYPE	4 -STROKE,SOHC
CYLINDER ARRANGEMENT	SINGLE CYLINDER
BOREx STROKE	3.50X2.80 in(89X71.2 mm)
ACTUAL DISPLACEMENT	442.9cc
COMPRESSION RATIO	9.1:1
STARING SYSTEM	ELECTRIC STARTER
LUBRICATION SYSTEM	WET SUMP

Specifications

MODEL	UXV450 <i>i</i> (OFF ROAD)
ENGINE OIL:	
CAPICITY/EXCHANGE/TYPER	2.85L/2.2L/5W-30
EXCHANGE WITH FILTER CHANGED	2.4L
FRONT GEAR BOX:	
CAPICITY/EXCHANGE/TYPER	270ML/250ML/SAE80#
REAR GEAR BOX	
CAPICITY/EXCHANGE/TYPER	250ML/230ML/SAE80#
AIR FILTER:	SPONGE ELEMENT
FUEL:	
TYPE	UNLEADED GASOLINE
FUEL TANK CAPACITY	8.32 gal (32 L)
THROTTLE BODY:	
TYPE/MANUFACTURER	PTA1/KYMCO
SPARK PLUG:	
TYPE/MANUFACTURER	CR7E-NGK
SPARK PLUG	0.7~0.8mm
CLUTH TYPE:	WET CENTRIFUGAL AUTOMATIC

Specifications

MODEL	UXV450 <i>i</i> (OFF ROAD)
TRANSMISSION:	
PRIMARY REDUCTION SYSTEM	V-BELT
SECONDARY REDUCTION SYSTEM	SHAFT DRIVE
TRANSMISSION TYPE:	CVT
TIRE:	
TYPE	TUBELESS
SIZE(FRONT)	25x 8-12
SIZE(REAR)	25x10-12
WHEEL MATERIAL	STEEL
PRESSURE FR/RR	0.7/0.98(kgf/cm ²) OR 10/14 psi
BRAKES:	
SYSTEM	FRONT AND REAR UNIFIED
TYPE(FRONT)	DUAL DISC BRAKE
TYPE(REAR)	SINGLE DISC BRAKE
OPERATION	FOOT OPERATION
SUSPENSION:	
FRONT SUSPENSION	DUAL A-ARM
REAR SUSPENSION	DUAL A-ARM
SHOCK ABSORBER:	COIL SPRING/OIL DAMPER

Specifications

MODEL	UXV450 <i>i</i> (OFF ROAD)
WHEEL TRAVEL:	
FRONT WHEEL TRAVEL	176mm
REAR WHEEL TRAVEL	172mm
ELETRICAL:	
IGNITION SYSTEM	DC, ECU AUTOMATIC CONTROL
GENERATOR SYSTEM	1. Rare earth A.C. generator or 2. Ferrite A.C.generator
BATTERY TYPE	MF-VTX20L
BATTERY CAPACITY	12V18AH
BULB VOLTAGE	
WATTAGE X QUANTITY:	
HAEDLIGHT:	12V35/35W*2
REAR LIGHT	12V21W/5W*2
BRAKE LIGHT	12V5W*2
POSITION LIGHT	12V5W*2
Max. Wattage for Accessary limitation	10W (Ferrite ACG model) 190W (Rare earth ACG model)

Note: The limitation is just for reference, using of accessories will void the vehicle warranty. In selecting and using accessories, you are personally responsible for your own safety and the safety of other persons involved.

Specifications

MODEL	UXV450 <i>i</i> (OFF ROAD)
SPECIFIED FUSES:	
MAIN FUSE	30A
FAN MOTER	10A
IGNITION	15A
LIGHT	15A
DC12VPOWER	15A
FUEL	15A
SPARE	15A

PERIODIC MAINTENANCE/LUBRICATION

ITEM	WHICHEVER COMES FIRST ROUTINE	INITIAL	EVERY		
		mi	100	600	1200
		Km	150	1000	2000
		MONTH	1	6	12
Engine oil	•Replace (Warm engine before draining).		<input type="radio"/>	<input type="radio"/>	<input type="radio"/>
*Oil strainer	•Clean. •Replace if necessary.		<input type="radio"/>	<input type="radio"/>	<input type="radio"/>
Engine oil filter cartridge	•Replace		<input type="radio"/>	<input type="radio"/>	<input type="radio"/>
Final gear oil	•Check oil level/oil leakage •Replace every 12 months.		<input type="radio"/>		<input type="radio"/>
Differential gear oil	•Check oil level/oil leakage •Replace every 12 months.		<input type="radio"/>		<input type="radio"/>
Air filter element (for engine and *V-belt compartment)	•Clean. (More often in wet or dusty areas.) •Replace if necessary.			<input type="radio"/>	<input type="radio"/>
*Throttle body	•Check idle speed/starter operation. •Clean if necessary.				<input type="radio"/>
*Cylinder head cover breather system	•Check breather hose for cracks or damage. •Replace if necessary.			<input type="radio"/>	<input type="radio"/>
Spark plug	•Check condition. •Adjust gap and clean. •Replace if necessary.		<input type="radio"/>	<input type="radio"/>	<input type="radio"/>
*Fuel line	•Check fuel hose for cracks or damage. •Replace if necessary.			<input type="radio"/>	<input type="radio"/>
*Valves	•Check valve clearance. •Adjust if necessary.		<input type="radio"/>	<input type="radio"/>	<input type="radio"/>

(Cont'd)

ITEM	WHICHEVER COMES FIRST	ROUTINE			
		mi	100	600	1200
		Km	150	1000	2000
	MONTH	1	6	12	
*Brake	<ul style="list-style-type: none"> •Check operation and brake fluid. •Replace brake pad if necessary. 		<input type="radio"/>	<input type="radio"/>	<input type="radio"/>
*Coolant	<ul style="list-style-type: none"> •Check coolant leakage. •Replace if necessary. •Replace coolant every 24 months. 		<input type="radio"/>	<input type="radio"/>	<input type="radio"/>
*V-belt	<ul style="list-style-type: none"> •Check operation. •Replace if damage or excessive wear. 		<input type="radio"/>		<input type="radio"/>
*Exhaust system	<ul style="list-style-type: none"> •Check leakage. •Retighten if necessary. •Replace gasket if necessary. 			<input type="radio"/>	<input type="radio"/>
Spark arrester	<ul style="list-style-type: none"> •Clean 			<input type="radio"/>	<input type="radio"/>
*Wheels	<ul style="list-style-type: none"> •Check balance/damage/runout. •Replace if necessary. 		<input type="radio"/>	<input type="radio"/>	<input type="radio"/>
*Wheel bearings	<ul style="list-style-type: none"> •Check bearing assembly for looseness/damage. •Replace if damaged. 		<input type="radio"/>	<input type="radio"/>	<input type="radio"/>
*Steering system	<ul style="list-style-type: none"> •Check operation. •Replace if damaged. •Check toe-in. •Adjust if necessary. 		<input type="radio"/>	<input type="radio"/>	<input type="radio"/>
*Drive shaft boots	<ul style="list-style-type: none"> •Check operation. •Replace if damaged. 			<input type="radio"/>	<input type="radio"/>
*Suspension	<ul style="list-style-type: none"> •Check operation. •Correct if necessary. 			<input type="radio"/>	<input type="radio"/>

(Cont'd)

ITEM	WHICHEVER COMES FIRST	ROUTINE			
			INITIAL	EVERY	
		mi	100	600	1200
		Km	150	1000	2000
	MONTH	1	6	12	
*Knuckle shafts/ Steering shaft	<ul style="list-style-type: none"> Lubricate every 6 months. 			<input type="radio"/>	<input type="radio"/>
*Fittings and Fasteners	<ul style="list-style-type: none"> Check all chassis fittings and fasteners. Correct if necessary. 		<input type="radio"/>	<input type="radio"/>	<input type="radio"/>

* : It is recommended that these items be serviced by a KYMCO dealer.

** : Lithium soap base grease.

Index

A

Auxiliary Outlet 25
Air Cleaner 60

B

Battery remove 62
Brake Fluid Inspection 59

Brake Pedal 34

C

Cargo Bed 36-38

Crossing Water 49

Cooling System Inspection 64

D

Differential Lock Mode 32-33

Daily Safety Checks 43

Driving Safely 44

Driving Downhill 47

Driving Uphill 48

Driving Reverse 50

E

Emission Control System 51-52

Engine Oil 53-56

F

Fuel Level Inspection/Refilling 16

Fuse Replacement 63

Index

G

Gear Selector 28

H

Hood 39-40

I

Indicator Lights 17

Ignition Switch 29

Ignition Switch Key 6

L

Light Switch 30

Location Of Parts 7-10

O

Operation Instruction for 19-24

P

Periodic Maintenance/Lubrication 74-76

Pillows Adjust 27

Parking Brake 35

Parking 47

R

Right Glove Compartment Key 6

S

Serial Number Locations 4-5

Start The Engine 45-46

Steering Wheel Adjuster 34

Spark Arrestor 52

Spark Plug Inspection 67

Specifications 69-73

Seat Removal 26

Seat Belts 26

Index

T

Throttle Pedal	34
Tool Kit	68

W

2WD/4WD Switch	31
Warning Labels Locaton	11-15

Maintenance Record

By KWANG YANG Motor Co., Ltd.

First Edition, Jun. 2016

All rights reserved. Any reproduction or
unauthorized use without the written permission of
KWANG YANG Motor Co., Ltd.
is expressly prohibited.

T200 –UA90GA –A7